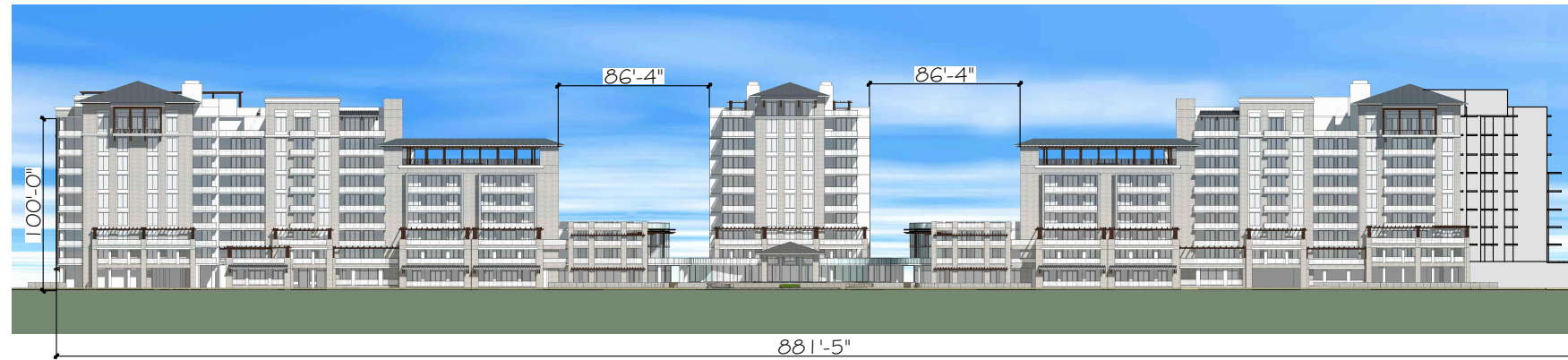
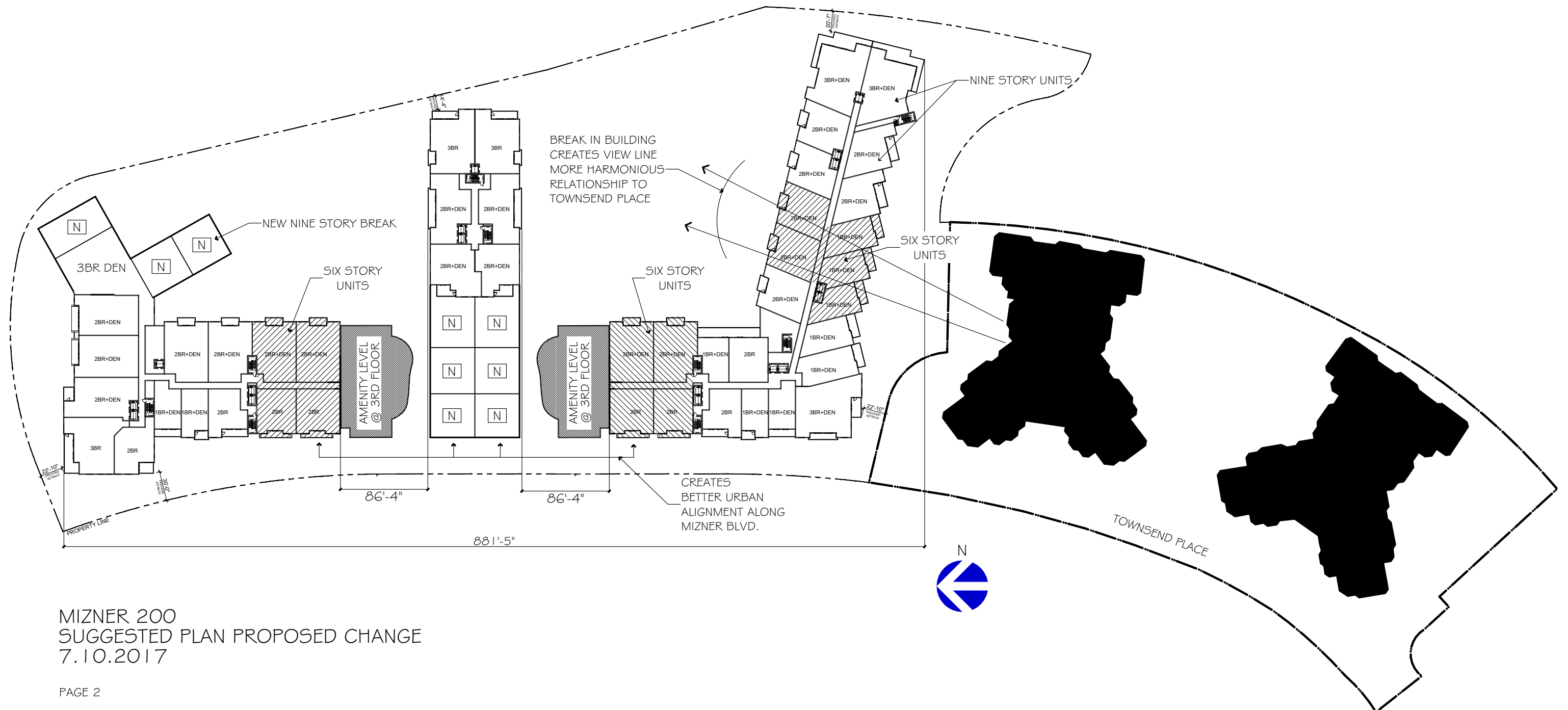


MIZNER 200
EXISTING PROPOSED PLAN AND ELEVATION
7.10.2017



KEY POINTS TO REDESIGN

1. SEPARATING BUILDINGS ALONG MIZNER BOULEVARD CREATES HARMONIOUS SCALE AND PERMITS VIEWS, WIND AND SUN CHANNELS.
2. STEP DOWN BUILDING NEAR TOWNSEND PLACE CREATE SIX OR SEVEN STORY MAX STEP DOWN THEN RISE BACK UP TO NINE STORIES ON EAST AND WEST SIDE OF IT.
3. THREE DISTINCT BUILDINGS WITH POSSIBILITY OF MORE TOWNHOUSES ALONG MIZNER BOULEVARD.
4. INTRODUCING "Y" CONCEPT AT NORTH TOWER ADDS ANOTHER NINE STORY STACK ON OCEAN VIEW SIDE.



MIZNER 200
SUGGESTED PLAN PROPOSED CHANGE
7.10.2017



SOUTH ELEVATION

SCALE 1:60'



EAST ELEVATION

SCALE 1:60'



WEST ELEVATION

SCALE 1:60'

MIZNER 200
SUGGESTED CHANGES
7.10.17